

# KNOTT ARCHITECTS - 101 STAPLETON HALL RD, HARINGEY, LONDON N4

Architects  
Planners  
KNOTT ARCHITECTS  
[www.knottarchitects.co.uk](http://www.knottarchitects.co.uk)

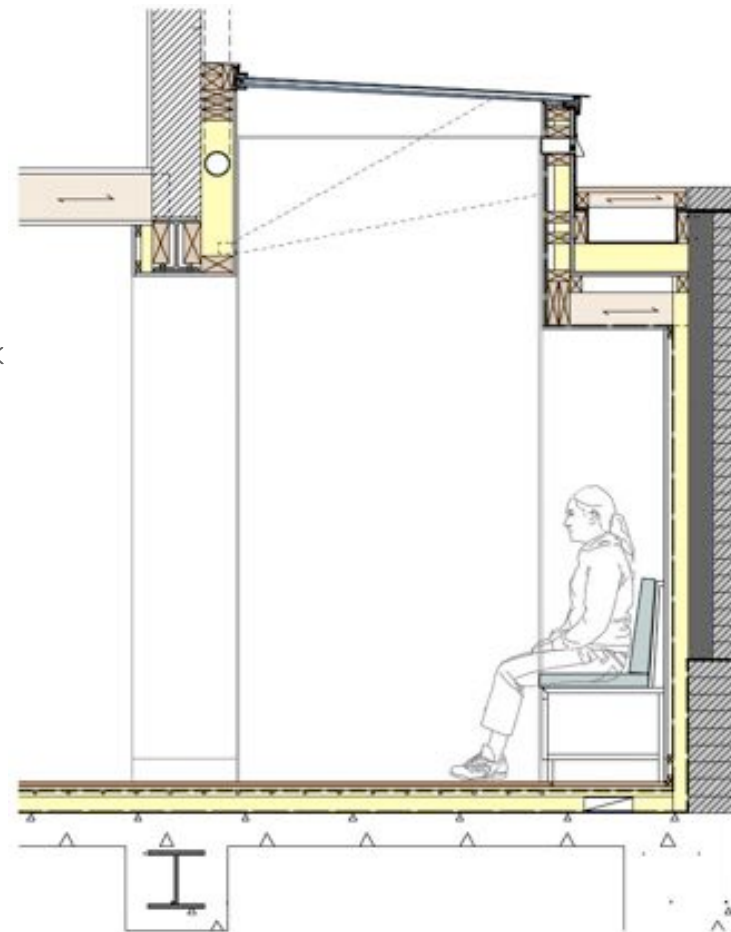
Engineers  
MBOK  
[www.mbok.co.uk](http://www.mbok.co.uk)

Contractor  
Rolandas Sinkevicius

Kitchen design  
True Bespoke Kitchens  
[www.truebespokekitchens.co.uk](http://www.truebespokekitchens.co.uk)

Photography  
Dome Photography  
[www.domephotography.com](http://www.domephotography.com)

Open Saturday 16 September 2017 13:00-17:00



The property is a Victorian terraced house on Stapleton Hall Road, N4. The house has been generally refurbished - maintaining the historic feel and features of the principle rooms.

At ground floor level a new infill extension in the existing side return opens up the kitchen and connects it to the existing living rooms, and transforms the dark ground floor area into a light, open plan, zoned family living space.

The extension uses a simple palette of materials; a brick wall facing the neighbouring garden, a narrow timber clad 'box' housing a built-in bench and storage, and a taller glass and galvanised steel element that links the old with the new.

The glass roof allows plenty of daylight to enter the existing rear living room, and together with the full height glass door provides an uninterrupted view of the garden, trees and the sky above.

